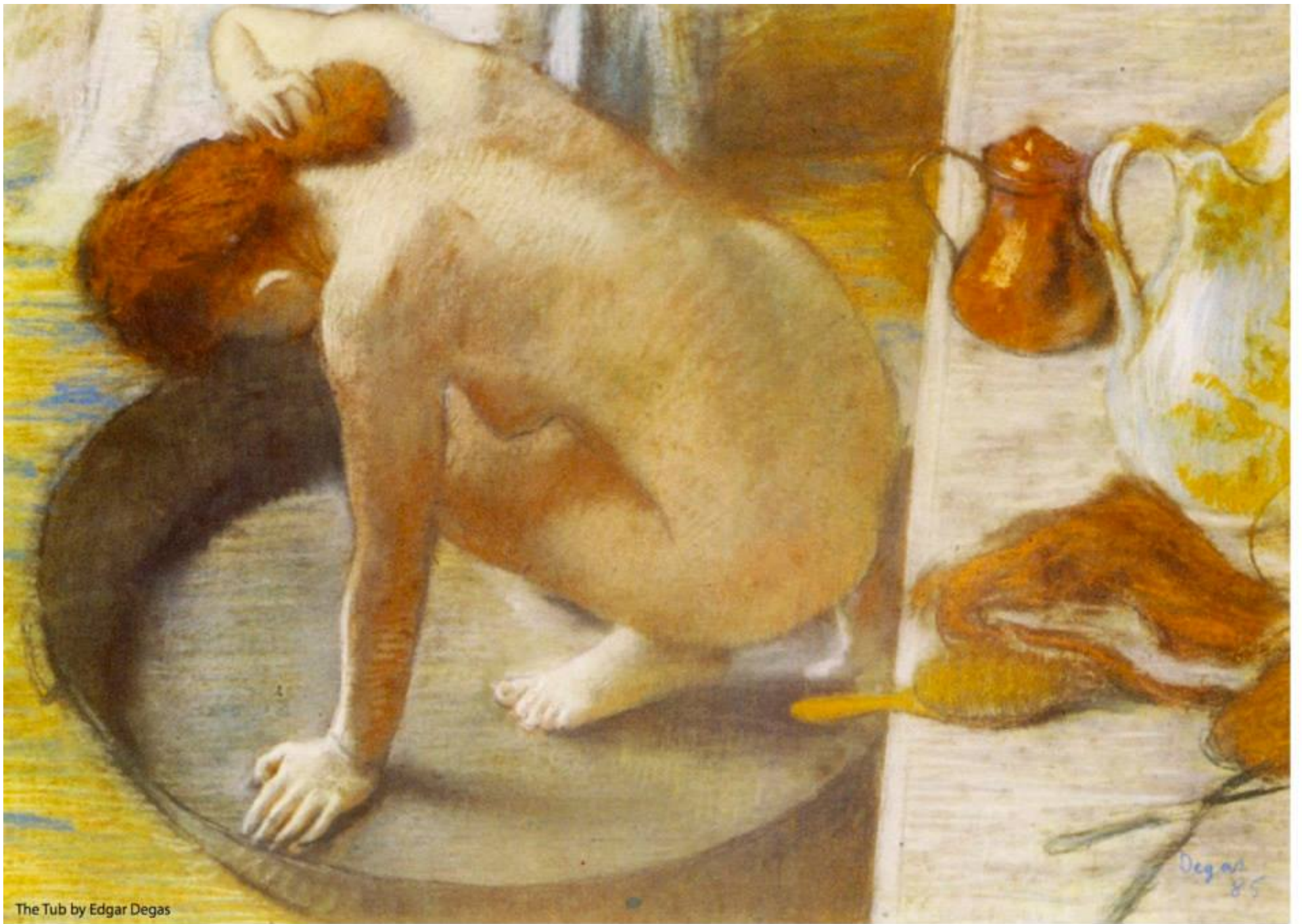


The Creation of Adam by Michelangelo, 1508–1512.



Nature morte (Still Life) by Le Corbusier, 1920



The Tub by Edgar Degas



Woman with a Parasol - Madame Monet and Her Son
by Claude Monet, 1875



Characters in yellow by Paul Klee

Assignment I:

Two-dimensional abstract interpretation

Process:

1. Students are asked to select one of the five well-known provided paintings
 2. Research and investigate the painting to come up with how students see the characteristic/essence/basic compositions of the painting.
 3. Select 4 keywords and make two-dimensional figure & ground composition to representation of each keyword in the 8" x 8" size 100-pound paper (one in white background 100 pound paper + one in black background paper)
- * Student needs to submit 8 works in total (2 works of each keyword / 4 keywords)

Objective:

- To analyze the elements & principles of composition from the selected painting
- To understand the relationship between space and form (Figure & Ground / Positive & Negative space)
- To be able to use the basic architectural elements to define space
- To practice the craftsmanship skill

Schedule: Section 411-415

Issue: 16/01/2018

Submit: 23/01/2018

Evaluation:

1. Design concept and execution
2. Design aesthetic (figure & ground compositions)
3. Craftsmanship (neatness and cleanliness)
4. Punctuation of time